

How to Add Database to ETS5

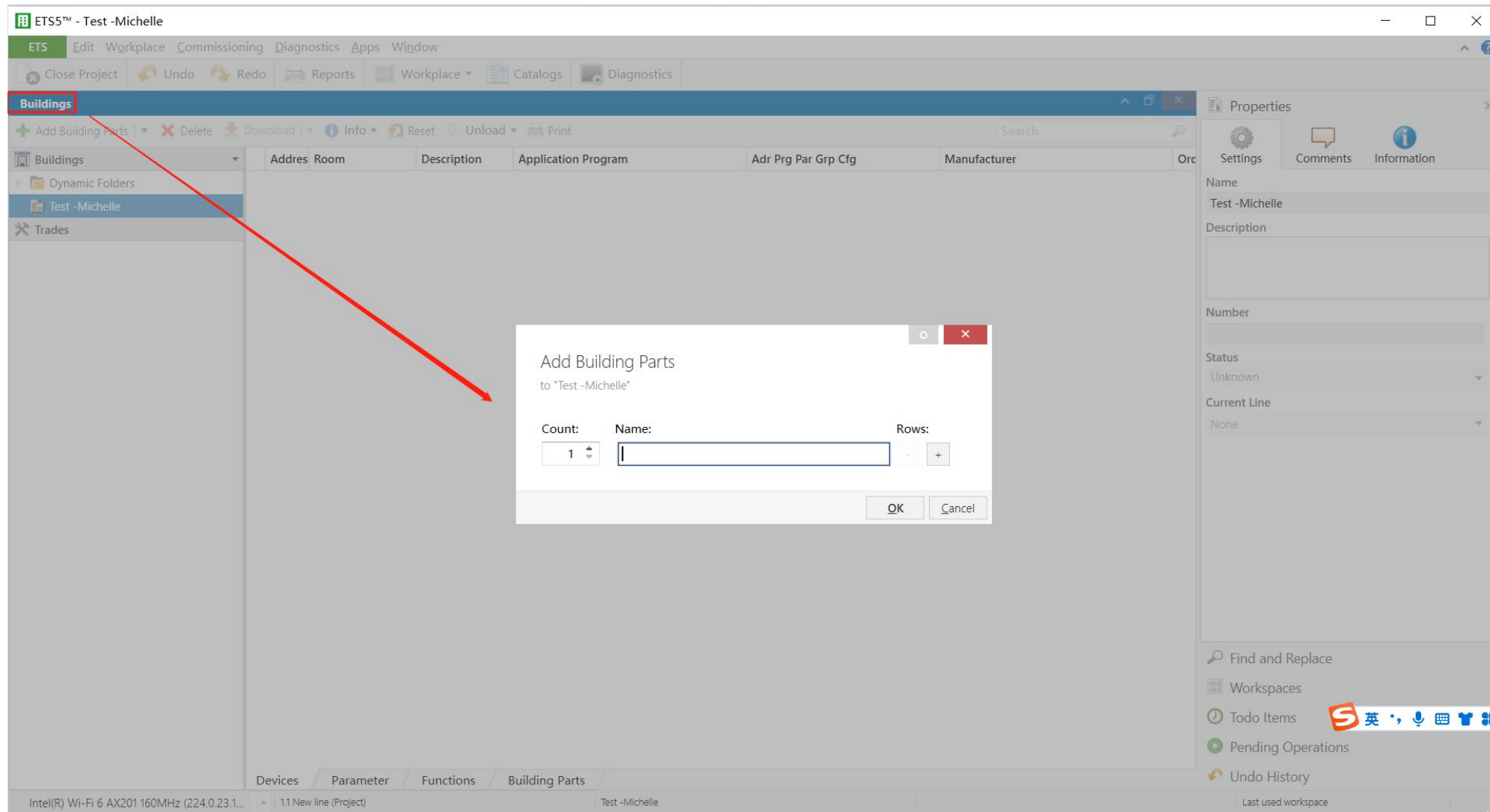
The screenshot shows the ETS5 software interface. At the top, there are navigation tabs: Overview, Bus, Catalogs, and Settings. Below these, there are sub-tabs: Projects, Archive, and ETS Inside. A red box highlights a '+' icon in the Projects tab, which has triggered a 'Create New Project' dialog box. The dialog box contains the following fields and options:

- Name:** Test -Michelle (highlighted with a red box)
- Backbone:** IP
- Topology:** Create Line 1.1 (checked), TP
- Group Address Style:** Free, Two Level, Three Level (selected)

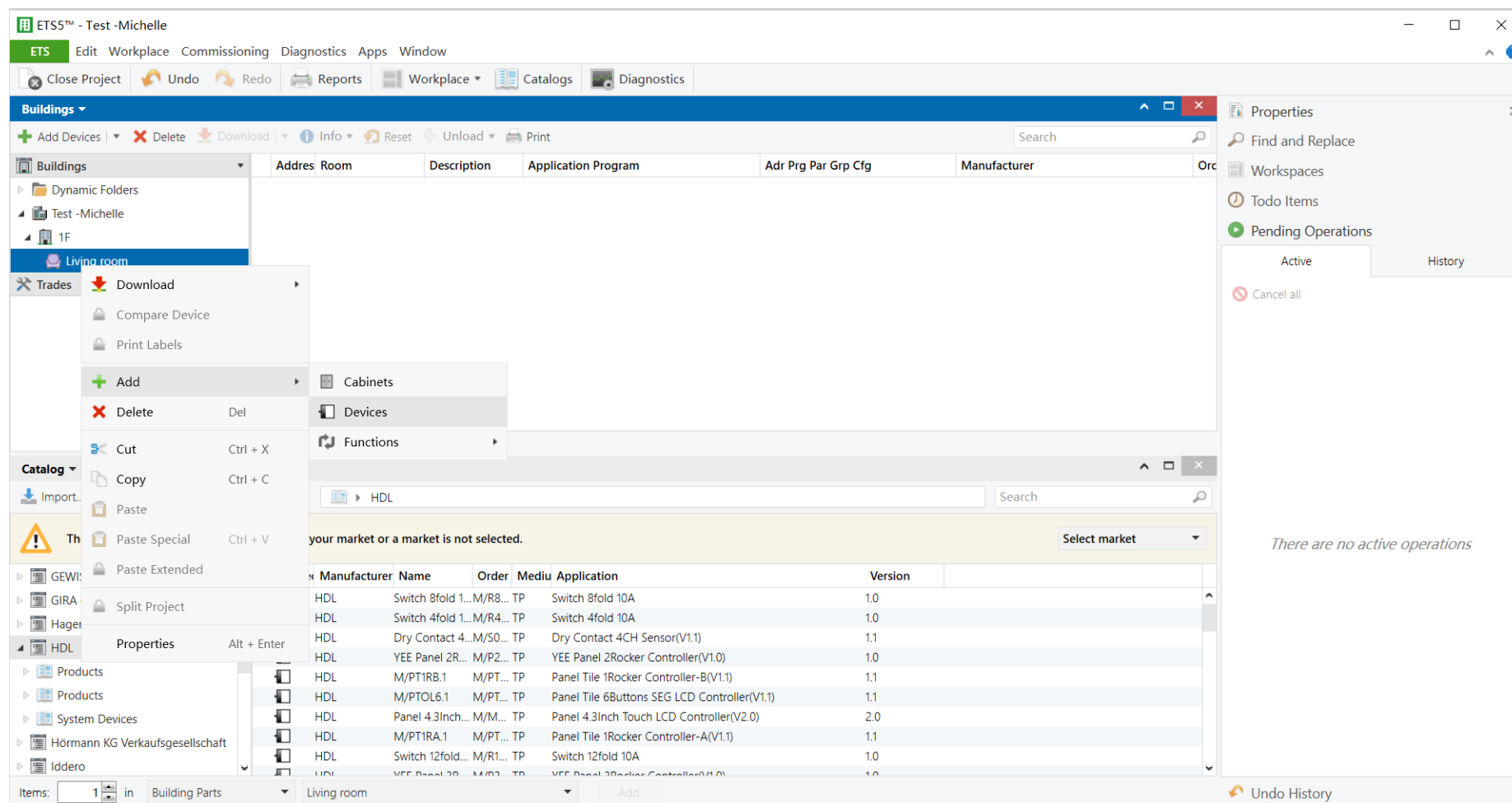
At the bottom of the dialog are 'Create Project' and 'Cancel' buttons. In the background, a table lists existing projects with columns for 'Last Modified' and 'Status'.

Last Modified	Status
2022/11/7 20:54	Editing
2022/11/4 14:03	Editing
2022/10/31 20:00	Editing
2022/10/9 11:39	Editing
2022/10/7 13:44	Editing
2022/9/15 10:48	Editing
2022/9/8 17:43	Editing
2022/9/7 10:32	Editing
2022/9/7 9:51	Editing
2022/8/5 10:35	Unknown
2022/7/22 16:35	Editing
2022/7/4 10:18	Editing
2022/4/2 18:00	Editing
2022/3/24 23:43	Editing
2022/3/22 11:06	Unknown
2022/3/22 11:06	Unknown
2022/3/21 17:22	Editing
2022/3/2 15:25	Editing

In Projects” tab from ETS5 software’s “Overview” page, click “+” to create projects. After editing project name, please keep other setting items by default.



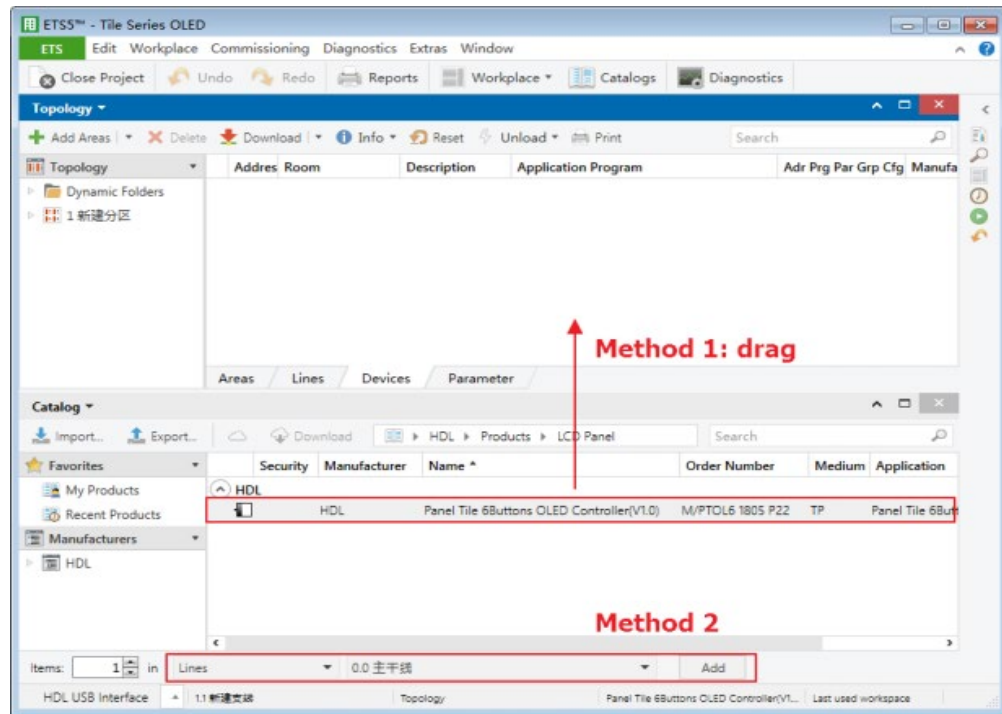
After creating a project, the project page will show up by default. Click “Add Building Parts” to add floors and rooms.



When add floor and rooms, right click the room name, and select “Devices”, and the catalog page will show up below.



Before select the database, must check the firmware version. eg, this panel's firmware is V1.3, then when you select the database, pls also select the 1.3 version, otherwise, it cannot work.



Click “HDL” in “Manufactures” column and select devices to be added to the project on the right. Drag devices to the above area (Method 1) or click “Add” button to add devices after clicking the location needed to add projects below (Method 2).

If you cannot find the database of a product in ETS5,
please contact our technical supports :
Whatsapp:+8618620993364
Website: www.hdlautomation.com

